



THE UNIVERSITY OF VERMONT
TRANSPORTATION &
PARKING SERVICES



The
UNIVERSITY
of VERMONT

TRANSPORTATION RESEARCH CENTER

Our Experience Bringing Electric Vehicle Charging Stations to UVM

**Jim Barr – Director
UVM Transportation &
Parking Services**
jim.barr@uvm.edu
T: (802) 656-8784

UVM EVSE Overview

1. How, and Why
2. Collaborators
3. Early Conclusions
4. 2017/18 EVSE Installations
5. 2019/20 EVSE Installations



1. How and Why

- Campus EV Charging Concept
- Why Do We Need EV Chargers?
- Justification for Study
- Collaborators
- Benefits and Results



2. Collaborators

- Undergraduate Student Researcher (TRC)
- Vermont Clean Cities
- UVM Transportation and Parking Services
- Green Mountain Power (regional utility)
- Burlington Electric Department (city utility)



3. Early Conclusions

- Low cost installation options
- Opportunities to collect data and engage students
- Looking for ways to integrate EV Charging into campus planning, and new construction



4. 2018 EVSE Installation

EV Charging Stations



These resources are provided for informational purposes only. Please read all disclosures as you use these services at your own risk.

Electric vehicle (EV) charging stations have been installed in various lots on campus. Stations may be accessed by anyone at any time, except stations in Gutterson Garage which are reserved for UVM permit holders only.

To access the EV stations, users must pay the established parking fees during posted hours of operation. Employees and students with a valid UVM parking permit do not have to pay through the Park Mobile application. Vehicles should be relocated as soon as possible following a charge to allow other users to access the stations (charging limited to 4 hours). To use the stations, register with ChargePoint. For questions about using the stations, call the 24/7 technical support hotline at 1-888-758-4389.

Off campus EV charging stations can be found on the PlugShare website.

2018 EVSE Installation

About the Charging Stations:

- Level 1: Slow-charging (120V); expectation the vehicle will be there most of the day.
- Level 2: Quick-charging (240V): allowing more turnover; expectation the vehicle will be filled within 4 hours and must be removed from space when a charge is complete.
- Electricity is not free, service provided by the Burlington Electric Department.
- Must be subscribed to use ChargePoint.
- If user does not hold a UVM permit, user must be a subscriber of Parkmobile to pay for space.
- Any permit holder can use any charging station on campus, but maximum parking time at these spaces is 4 hours, vehicles must be moved back to their regular parking assignments after vehicle is charged or 4 hours

Spaces are reserved for up to 4 hours and available to electric vehicles only. No parking payment is required after restricted hours as posted.

2018 EVSE Installation

Electric Vehicles Charging Station Locations Around Campus

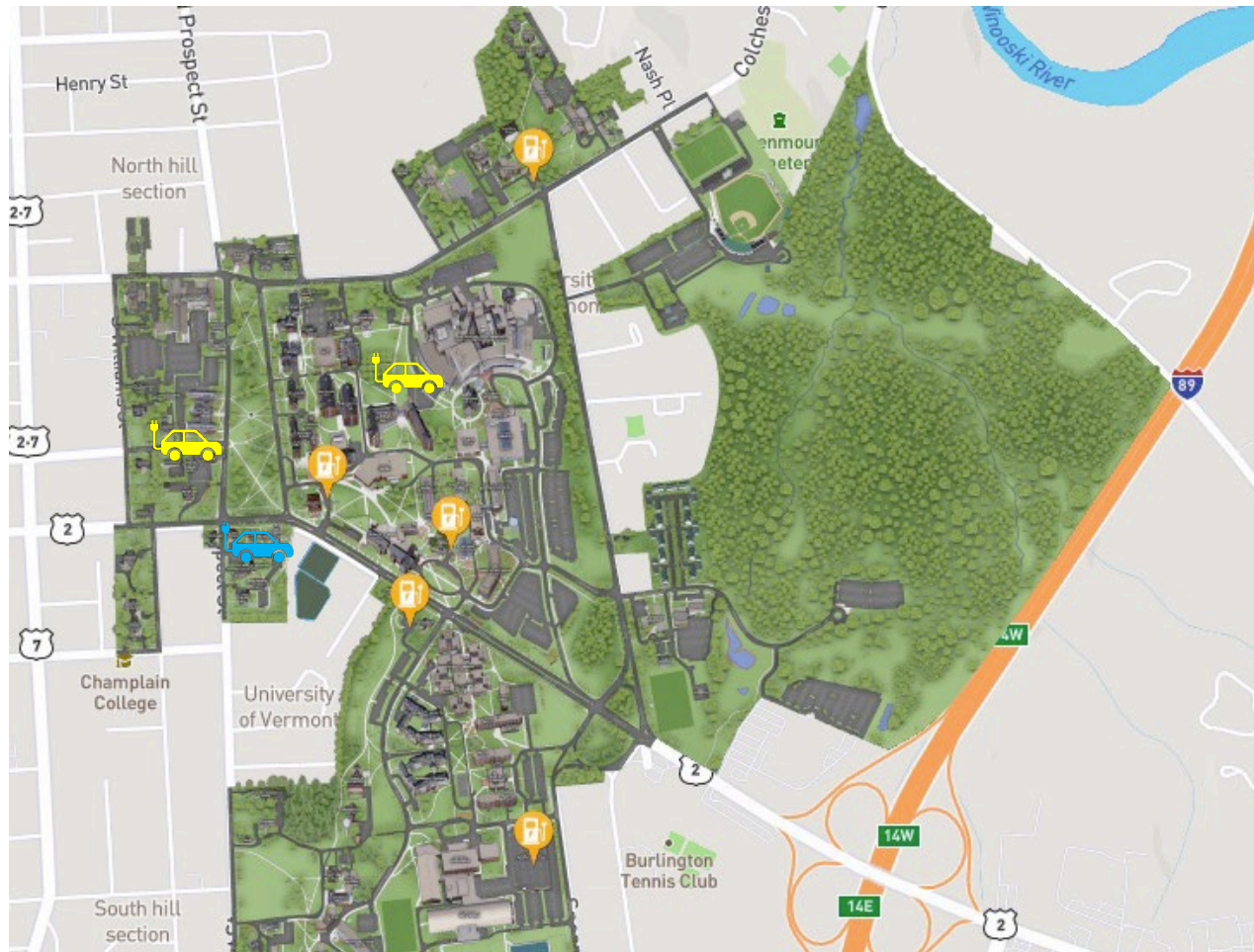
- Two Level 2 plugs at Aiken Building, 81 Carrigan Drive at the loading dock adjacent to Davis Center Oval.
- Two Level 2 plugs at the Johnson House at 601 Main Street.
- Two Level 2 plugs at the entrance to upper Trinity Campus at 208 Colchester Avenue.
- Two Level 2 plugs on the east side of Morrill Hall at 146 University Place.
- Two Level 1 plugs in the middle level of the Gutterson Garage in the southwest corner at 95 Spear Street. (UVM Parking Permit ONLY)

Electric Vehicle Charging Station locations [Map](#) (link opens in new window).

2018 EVSE Installation

The screenshot displays a mobile application interface for The University of Vermont. At the top left, there is a search icon and the university's logo. Below this is a banner image of the campus with 'Locations' and 'Tours' tabs. A filter menu is open, showing options for 'Transportation and Parking' with sub-options: CarShare Vermont, Transit, Parking, Bike, and Electric Vehicle Charging Stations (which is selected with a checkmark). The main area is a map of the university campus, showing buildings, streets, and green spaces. Several orange icons representing EVSE locations are placed on the map, primarily in the central and southern parts of the campus. The map also shows surrounding roads like N Union St, S Union St, and I-89. At the bottom left, there is contact information for The University of Vermont: Burlington, VT 05405, (802) 656-3131, and social media icons. At the bottom right, there are links for 'TERMS OF SERVICE', 'PRIVACY', and 'CONCEPT 3D'.

5. 2019 New EVSE Installations



Questions or Comments?

